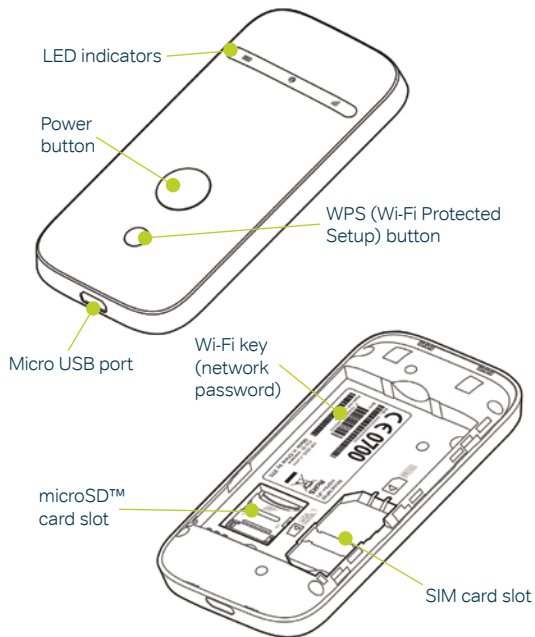





Contents

Getting to know your JT Hotspot _____	2
Setting up your JT Hotspot _____	4
Connecting to your JT Hotspot _____	7
Viewing and changing your JT Hotspot settings _____	11
Troubleshooting _____	12
Safety information _____	14

Getting to know your JT Hotspot

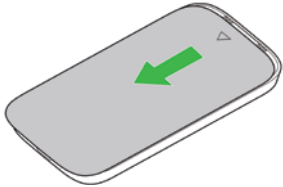


LED indicators

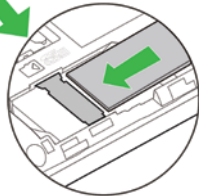
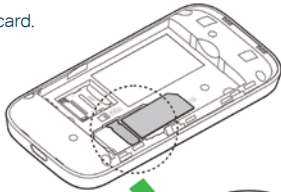
Indicator	Status	What's happening
	Red solid	Error status. SIM card isn't registered on a mobile network, no SIM card inserted or no mobile network service available
	Green solid	Connected to a mobile network
	Green flashing	Connected to a mobile network and transferring data
	Blue solid	Wi-Fi is active
	Blue flashing	WPS (Wi-Fi Protected Setup) is active
	Off	Wi-Fi is off or your JT Hotspot is in sleep mode
	Red solid/ flashing	The battery is low and needs charging
	Green flashing	The battery is being charged
	Green solid	The battery level is middle or high
	Off	Your JT Hotspot is in standby mode and not being charged, or the battery isn't fitted

Setting up your JT Hotspot

1. Slide the back cover to remove it.

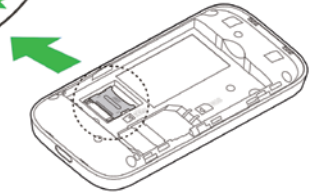
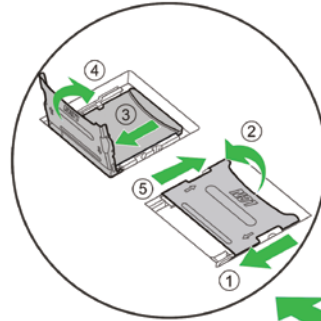


2. Insert your SIM card.



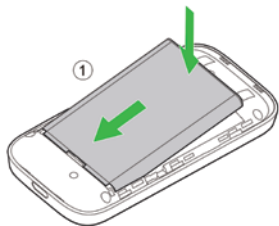
Important: your JT Hotspot doesn't support Micro, Nano or any other non-standard SIM cards.

3. If you want to use your JT Hotspot as a data storage device, insert a microSD™ card. (This is optional, you don't need a microSD card to use your JT Hotspot.)

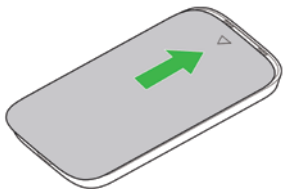


is a trademark of SD Card Association

4. Insert the battery.



5. Close the back cover.



Important: make sure your device has enough ventilation to stop it overheating. If it does overheat and shuts down, put it in a well-ventilated place to cool down before turning it on again.

Connecting to your JT Hotspot

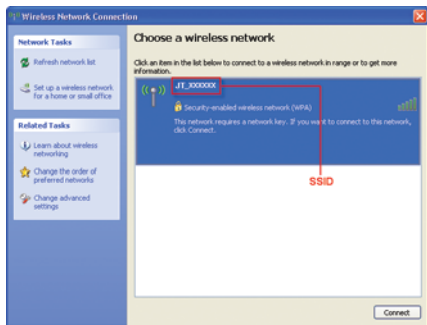
You can connect to your JT Hotspot by Wi-Fi or with a USB cable. When connecting with Wi-Fi, you can connect up to ten devices to your JT Hotspot.

Connecting with Wi-Fi

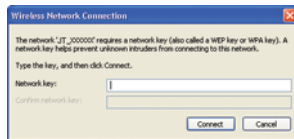
1. Turn on your JT Hotspot by pressing the power button for around five seconds. It'll take a few moments to start up, then the Wi-Fi LED will glow blue and the network LED will glow green.
2. Turn on the device that you want to connect to the JT Mobile Hotspot, making sure its Wi-Fi is switched on.
3. If the device you want to connect to the JT Hotspot supports WPS, go to step 4. If not, go to step 6.
4. Set up WPS by pressing the WPS button on your JT Mobile Hotspot until the Wi-Fi indicator flashes blue.
5. Select the 'JT_XXXXXX' network on the device you want to connect (XXXXXX will be specific to the device) and follow the prompts.

Note: how you set up WPS on your device may vary, depending upon its operating system. Some operating systems, e.g. Mac OS X, don't support WPS. If your device doesn't support WPS, go to step 6.

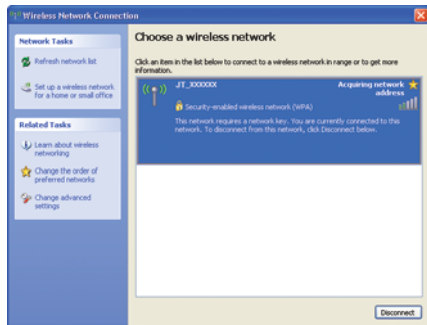
6. On the device that you want to connect to your JT Hotspot, choose the 'JT_XXXXXX' SSID and click **Connect**. The connection manager will look something like this:



7. Enter the Wi-Fi key, then click Connect. The Wi-Fi key can be found on the box or on a sticker under the battery.

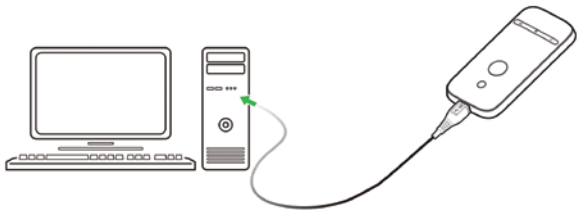


8. Wait a few moments and you'll see a message that you're connected.



Connecting via USB cable

1. Connect your JT Hotspot to a device using a compatible USB cable.



2. Turn on your JT Hotspot by pressing the **power** button for around five seconds. It'll take a few moments to start up, then the Wi-Fi LED will glow blue and the **network** LED will glow green.
3. Your device should recognise and automatically install the new hardware. If it doesn't, in Windows, run the installation from **My Computer > ZTEMODEM** (other operating systems may vary).
4. Wait a few moments until you're connected.

Viewing and changing your JT Hotspot settings

To view or change your JT Hotspot's settings, access the configuration page by entering **http://192.168.0.1** or **http://m.home** in your web browser. The default password is **admin**.

Automatic or manual connection

Once you've connected your device to the JT Hotspot (see above) you can access the internet in either **Automatic** or **Manual** mode.

Mode	How to get online
Automatic	Your device will connect to the internet automatically. This is the default setting
Manual	To manually connect and disconnect, log in at the JT Hotspot configuration page (see above) and select Settings > 3G Settings > Network Select > WAN Connection Mode > Manual , and then click Connect or Disconnect

Troubleshooting

Can't set up the USB connection between your device and PC

- Make sure you've installed the software. Run the installation program at **My Computer > ZTEMODEM**.
- You might need to uninstall the software, then reinstall it using the instructions above.

Can't set up the Wi-Fi connection with your JT Hotspot

- Make sure Wi-Fi on your computer is turned on.
- Refresh the network list and select the 'JT_XXXXXX' network.
- Make sure you've entered the right Wi-Fi key when you connect to the device. You'll find it on the box or on a sticker under the battery in the JT Hotspot.

Can't get online when connected to the JT Hotspot

- Make sure your SIM card is active. If the network indicator is red, see the lights table on page 4.
- Move your JT Hotspot to see if you can get a better signal.

Can't get to the JT Hotspot configuration page

- Check you've entered the right address in your web browser. Either **http://192.168.0.1** or **http://m.home**.
- Use only one network adapter in your PC.
- Don't use a proxy server.

Wi-Fi key

- You'll find the Wi-Fi key for your JT Hotspot on the box or on a label under its battery.
- If you've changed the Wi-Fi key, and forgotten it, you need to restore the factory default settings. To do that, log in to the JT Mobile Hotspot configuration page, select **Settings > Advanced > Reset**, and then click **Reset** to restore the factory default settings.

JT Hotspot configuration page password

- The default password of the JT Hotspot configuration page is **admin**.
- If you've changed the JT Hotspot configuration password, and forgotten it, you need to restore the device to the factory default settings. To do that, press both the **Power** button and the **WPS** button together for five seconds until the lights flash off and back on.

Safety information

Interference in vehicles

- Unless they're properly shielded, some electronic devices, such as electronic systems of vehicles, are susceptible to electromagnetic interference transmitted by the JT Hotspot.
- Don't place this device in the area over a vehicle's air bag or in the air bag deployment area. Store the device safely before driving your vehicle.
- If necessary, check the device or vehicle manufacturer before using the JT Hotspot.

Interference with medical equipment

- Switch off your wireless device when asked to do so in hospitals, clinics or health care facilities. This will help stop interference with sensitive medical equipment.
- Operation of your PC and JT Hotspot may interfere with personal medical devices such as hearing aids and pacemakers.
- Always keep the JT Hotspot at least 20 centimetres away from such medical devices when they're in use. Turn off the JT Mobile Hotspot if necessary. Consult a doctor or the manufacturer of the medical device before using the JT Hotspot.

Use in explosive environments

Be aware of usage limitations when using a JT Hotspot in places where there may be explosive gases or explosive products present. Such areas include but are not limited to the following:

- petrol stations and fuel depots.
- containers/vehicles for storing or transporting fuels or chemical products.
- areas where the air contains chemical substances and particles (including granules, dust, or metal powder).
- areas indicated with 'Explosives' signs, e.g. quarries where radio signals may interfere with blasting operations.
- areas indicated with 'Turn off two-way radios' or similar signs.
- areas where you're instructed to stop vehicle engines.
- If in doubt, don't use the JT Hotspot.

Children's safety

- Store the JT Hotspot out of the reach of small children. It isn't meant to be used as a toy and may cause injury if used as such.
- Don't allow children to use the JT Hotspot without guidance. It contains small and sharp components which can be a danger to children or cause suffocation if swallowed.

Care of your JT Hotspot

- Use only original accessories or accessories that are authorised by the manufacturer. Using any unauthorised accessories may affect your JT Hotspot's performance.
- Avoid using the JT Hotspot near metallic structures or facilities that can emit electromagnetic waves which may interfere with the reception of signals.
- The JT Hotspot is not waterproof so keep it dry, free from moisture and store it in a cool place away from sunlight.
- Don't use the JT Hotspot immediately after a sudden temperature change as this can cause condensation both inside and outside the JT Hotspot.
- Treat the JT Hotspot carefully. Don't drop, bend, knock or harshly treat it.
- Don't try to take the JT Hotspot to pieces as this will invalidate your warranty. There are no user serviceable parts inside and only a qualified maintainer should carry out repair work.

Use in aircraft

Turn off the JT Hotspot when on board an aircraft. In order to protect the aircraft's communication and navigations systems from interference, it's forbidden to use the JT Hotspot in flight. Only use the JT Hotspot before take-off with the crew's permission and according to local safety regulations.

Using the battery

- Don't short-circuit the battery, as this can cause excessive heat and fire.
- Don't store the battery in hot areas or dispose of it in a fire.
- Don't dismantle or modify the battery.
- When not using the battery for a long period, remove it from your JT Hotspot and store it in a cool dry place.

Environmental protection

Observe the local regulations regarding the disposal of your packaging materials, used JT Hotspot and accessories, and use recycling facilities wherever you can.

WEEE approval

This JT Hotspot complies with the essential requirements and other relevant provisions of the Waste Electrical and Electronic Equipment Directive 2002/96/EC (WEEE Directive).

RoHS approval

This JT Hotspot complies with the restriction of the use of certain hazardous substances in electrical and electronic equipment Directive 2002/95/EC (RoHS Directive).

Laws and regulations

Observe all applicable laws and regulations when using your JT Hotspot. Respect the privacy and legal rights of others.

Emergency calls

This JT Hotspot works by receiving and transmitting radio signals, and the connection can't be guaranteed in all conditions. In an emergency, you shouldn't rely solely on the JT Hotspot for essential communications.

Specific Absorption Rate (SAR)

- Your JT Hotspot is a radio transmitter and receiver. It's designed not to exceed the limits for exposure to radio waves recommended by international guidelines. These guidelines were developed by the independent scientific organisation ICNIRP and include safety margins designed to protect all persons, regardless of age and health.
- The guidelines use a unit of measurement known as the Specific Absorption Rate, or SAR. The SAR limit for wireless devices is 2.0 W/kg and the highest SAR value for this device when tested complied with this limit.

CE approval (European Union)

The JT Hotspot is approved to be used in the member states of the EU. The wireless device complies with the essential requirements and other relevant provisions of the Radio and Telecommunications

Terminal Equipment Directive 1999/5/EC (R&TTE Directive).

Body-worn operation

To comply with RF exposure guidelines, the JT Hotspot must be used with a minimum of 1.5 cm separation from the body. Failure to observe these instructions could result in your RF exposure exceeding the relevant guideline limits.